



# STREETSCAPE SURVEY

---

2018



# INTRODUCTION

---

Welcome to the 2018 Streetscape Assessment Survey. This survey is to identify blocks and corridors within the Center City District that could most benefit from streetscape improvements. The survey takes into account both the environment and the pedestrian experience, to create an inventory of existing conditions of Center City streetscapes. This round of surveying focuses on six zones that were identified earlier in the process. Your participation will help CCD to target investments that will enhance the beauty and vitality of the downtown.

This guidebook provides definitions and example photos for the survey metrics to ensure consistency and comparability across groups. Please bring this guide with you when surveying.

Instructions on how to use this guide and the survey are on the back on this booklet.

Link to survey web app:

**<http://bit.ly/CCDStreetSurvey>**

Thank you for your time!

## 1. SIDEWALK CONDITION

### A. Rate the Quality of the Sidewalk

---

#### 1 VERY POOR

Large cracks in sidewalk;  
missing parts of sidewalk;  
uneven



#### 2 POOR

Cracks; patchwork of different  
paving materials; somewhat  
uneven



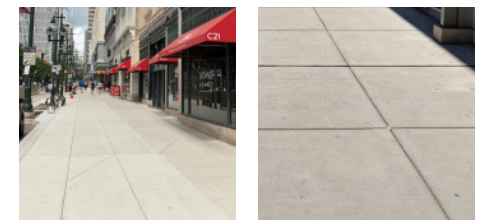
#### 3 GOOD

Relatively level; no cracks or  
fragments; very little  
patchwork



#### 4 VERY GOOD

Level; consistent;  
no patchwork or cracks



## 1. SIDEWALK CONDITION

### B. Rate the cleanliness of the sidewalk

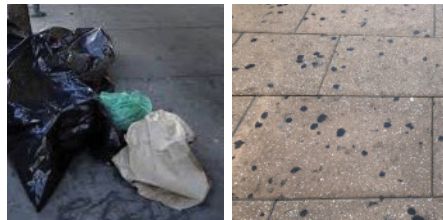
#### 1 VERY DIRTY

Soot; Residues dried or caked on sidewalk; Long-term sitting sludge; Trash on sidewalk - would require large cleanup effort/heavy machinery to remove debris



#### 2 DIRTY

Some unswept garbage or litter; overflowing dumpsters; Some residues dried or caked on sidewalk - would require a team to clean



#### 3 MOSTLY CLEAN

Trash free, but with some stains and gum patches on sidewalk - would require deep power washing to remove surface stains



#### 4 VERY CLEAN

Very clean - no stains or gum



## 2. BUILDING/STOREFRONT CONDITION & QUALITY

### A. Rate the condition of the storefronts/building facades on the block

#### 1 VERY POOR

Grime, soot, or graffiti on buildings; facade in poor condition; Awnings or signs are ripped and/or in state of disrepair. Would require construction/maintenance work to repair damage.



#### 2 POOR

Some grime on buildings; facade in okay condition; dirty (but intact) signage/awnings. Needs significant cleaning



#### 3 GOOD

Buildings are in good condition but needs minor alterations or repairs from temporary disruptions; The building facades are clean and in good condition; needs sticker/graffiti removal.



#### 4 VERY GOOD

Facade is in good condition; Windows are clean; No graffiti or disruptions; Little or no grime.



**N/A** No buildings (entire block is park, parking lot, vacant lot, bridge, etc)

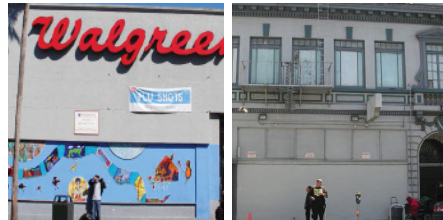


## 2. BUILDING/STOREFRONT CONDITION & QUALITY

### B. Rate the overall transparency of the storefronts/buildings on the block

#### 1 VERY POOR

A majority of the block has no potential for transparency without major structural changes; Boarded up or fully blocked storefronts; No visibility; Blank wall.



#### 2 POOR

A majority of the block has potential for transparency; "Hard" blockage: visibility blocked by structural elements such as blinds, display cases, or grilles with less than 75% transparency.



#### 3 GOOD

A majority of the block has potential for better transparency; "soft" blockage: visibility blocked by temporary and easily removed items such as posters, signboard, or window film.



#### 4 VERY GOOD

A majority of the block is transparent; interior of storefront is visible from sidewalk; windows signs are less than one third of window space (includes display of store-related products or activities).



**N/A** No buildings (entire block is park, parking lot, vacant lot, bridge, etc)

## 2. BUILDING/STOREFRONT CONDITION & QUALITY

### C. Please rate the vibrancy of the built environment on this block.

#### 1 INACTIVE

Parking or vacant lot; Large units with few doors; Very little or no transparency; Many vacant units; Uniform facades with no details or nothing to look at.



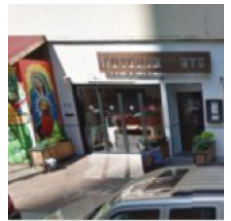
#### 2 DULL

Large units with few doors; Low transparency; Some vacant units; Few or no details.



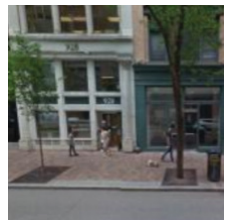
#### 3 ACTIVE

Relatively small units; Some transparency; Few vacant units; Some articulation and detail.



#### 4 VIBRANT

Small units with many doors; high transparency; Very few to no vacant units; Lots of character; Good articulation, materials and details.



#### M MONUMENT

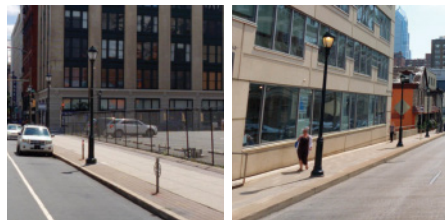
A historic or visually interesting façade that may not be very active or transparent, but is visually remarkable.



### 3. STREETSCAPE ASSET EVALUATION

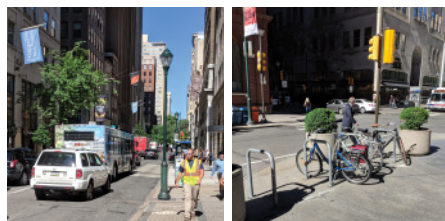
#### A. How strong is the presence of greenery on the block? (trees, plantings, etc.)

##### 1 NONE



##### 2 LOW

Only a few trees and/or planters and/or hanging baskets; A lot of gaps in the fabric where greenery could be added.



##### 3 MEDIUM

A decent amount of trees and/or planters and/or hanging baskets; Some gaps in the fabric where greenery could be added.



##### 4 HIGH

A lot of trees and planters and hanging baskets; no gaps in the fabric.



### 3. STREETSCAPE ASSET EVALUATION

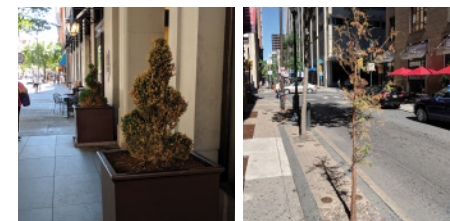
#### B. Rate the Quality of the greenery and landscaping on the block

##### 1



##### 2 POOR QUALITY

Sad looking trees and plants; dying plant material; would need some new plantings and maintenance



##### 3 GOOD QUALITY

Trees and plants mostly in good shape, could use some light maintenance



##### 4 VERY GOOD QUALITY

Plants are trees are healthy, well maintained, and pruned so you can easily see storefront signage; landscaping is full and attractive





## 3. STREETSCAPE ASSET EVALUATION

### C. Rate the sidewalk in terms of pedestrian amenities (pedestrian lights and signage, bus shelters, bike racks, garbage cans, benches, etc.)

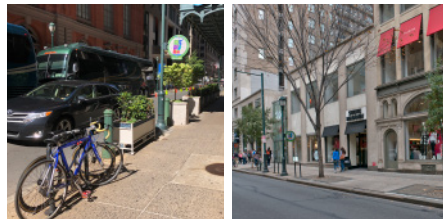
- 1 NONE**  
Street signs and lights are scaled/oriented to motorists, pedestrian walkway interrupted by many or heavily used curbcuts/driveways, environment feels unwelcoming to pedestrians



- 2 MINIMAL**  
Few pedestrian amenities, street feels generally not pedestrian friendly



- 3 ADEQUATE**  
Lighting and signs are at pedestrian scale, adequate pedestrian amenities; environment feels comfortable



- 4 GREAT**  
Street lamps are at pedestrian scale, signage is pedestrian oriented, no walkway interruptions, presence of bike racks, bus shelters, benches create welcoming environment



## 3. STREETSCAPE ASSET EVALUATION

### D. Rate the uniformity of the streetscape

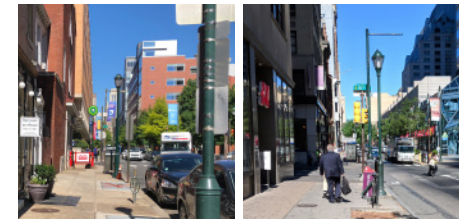
- 1 NO CONSISTENCY/NONE**  
No clear pattern in the size, placement or materials used in streetscape elements, including trees, planters, plant material, grates, light poles, banner poles, sidewalk pattern/materials, benches/other street furniture



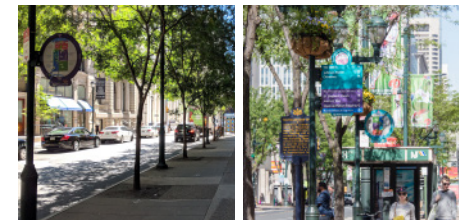
- 2 LITTLE CONSISTENCY**  
Sporadically spaced streetscape elements; Streetscape elements on one half of the block do not match the second half



- 3 MOSTLY CONSISTENCY**  
Equally spaced and sequenced streetscape elements, but not fully matching in size and/or materials used.



- 4 FULLY CONSISTENCY**  
Uniform, planned streetscape – same type and size of trees, planters, plant material, grates, light poles, banner poles, sidewalk pattern/materials, benches/other street furniture; Equally spaced and sequenced throughout the block.



## 4. THE PEDESTRIAN EXPERIENCE

### A. How would you characterize the pedestrian activity on this block?

---

**1** **EMPTY**  
0 to 3 people

**2** **SOMEWHAT ACTIVE**  
4 to 10 people

**3** **ACTIVE**  
11 to 25 people

**4** **BUSY**  
More than 25 people

### B. How would you characterize the vehicle traffic on this block?

---

**1** **COMPLETELY GRIDLOCKED**  
Traffic at standstill

**2** **HEAVY CONGESTION**  
Traffic at a crawl

**3** **SOME CONGESTION**  
Light traffic

**4** **NO CONGESTION**  
Free flowing traffic

### C. Do you feel safe crossing the street?

---

**1** **NO**

**2** **MOSTLY NO**

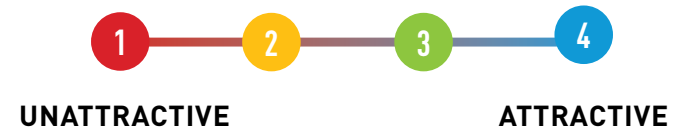
**3** **MOSTLY YES**

**4** **YES**

## 5. OVERALL

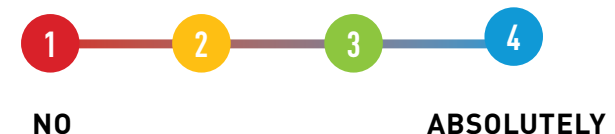
### A. How would you rate the visual environment on this block?

---



### B. Do you feel safe on this block overall?

---



### C. Considering all the aspects in this survey, how do you rate this block overall?

---





# DIRECTIONS

---

- 1 Go to <http://bit.ly/CCDStreetSurvey> to access the survey through the Survey123 web app.
- 2 Enter the unique identifier for blockface to be surveyed. Each blockface has a unique number that corresponds to its location, which are shown on the map on page 2 of this booklet.
- 3 Answer the survey questions focusing on just the specific blockface, referring to this booklet for definitions (i.e. what constitutes poor quality vs good quality).
- 4 At the bottom of the survey, please attach a photo of the block.
- 5 If there is anything, good or bad, that stands out to you on the block, make a note of it in the additional comments section.
- 6 Once you hit submit, Survey123 will redirect you to a page indicating that your response was submitted successfully. There will also be a hyperlink to click "here" to submit again. Click the submit again link to be taken back to a new survey form and continue on to the next block.

*\*If you encounter a block heavily under construction (so much so that it is changing the appearance and/or character of the block or is otherwise masked by scaffolding), skip all of the survey questions, write "construction" in the comment box, and then submit.\**